

+ IP 20



LOA



PHYSICAL DATA

FEATURES

- Material: Aluminium
- Magnetic installation of luminaires
- 48V allows for longer installation runs and affords more fittings per run
- PWM Dimmable with EUChip driver

OPTIONS & ACCESSORIES

- The LUNA S DC Recessed Magnetic Track System is available
- The LUNA M Magnetic Track system is available

MOUNTING

Surface Track

APPLICATION AREAS

Indoor, Commercial, Residential, Hospitality, Retail, Museums, Galleries, Cultural Centres

TECHNICAL DATA

POWER SUPPLY FEED

	LF001584	LF001574	LF001575	LF001576	LF001577
OPERATING VOLTAGE	48V	48V	48V	48V	48V
MODEL	S ON DC-24/48-0.5M	S ON DC-24/48-1M	S ON DC-24/48-1.5M	S ON DC-24/48-2M	S ON DC-24/48-2.5M
DIMENSIONS	500 x 42.3 x 18mm	1000 x 42.3 x 18mm	1500 x 42.3 x 18mm	2000 x 42.3 x 18mm	2500 x 42.3 x 18mm

INTERMEDIATE TRACK

	LF001585	LF001579	LF001580	LF001581	LF001582
OPERATING VOLTAGE	48V	48V	48V	48V	48V
MODEL	S ON DC-24/48C-0.5M	S ON DC-24/48C-1M	S ON DC-24/48C-1.5M	S ON DC-24/48C-2M	S ON DC-24/48C-2.5M
DIMENSIONS	500 x 42.3 x 18mm	1000 x 42.3 x 18mm	1500 x 42.3 x 18mm	2000 x 42.3 x 18mm	2500 x 42.3 x 18mm



Lights By Linea
Since (1990)

Cape Town | 48 Marine Dr, Paarden Eiland | T: +27 21 511 6116
info@lightsbylinea.com | www.lightsbylinea.com

E&OE MAY OCCUR



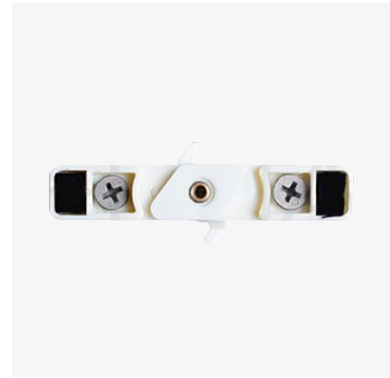
LUNA S ON CORNER L1
LF001586

MODEL	S DC-24/48-L1
OPERATING VOLTAGE	48V
COLOURS	BLACK
WARRANTY	3 YRS
DIMENSIONS	150 X 150 X 18mm



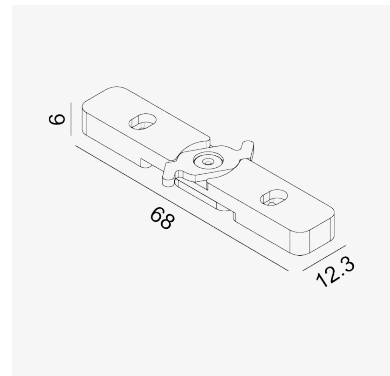
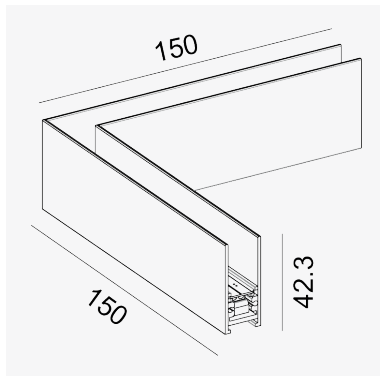
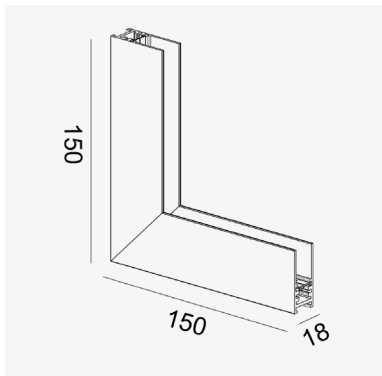
LUNA S ON CORNER L2
LF001587

MODEL	S DC-24/48-L2
OPERATING VOLTAGE	48V
COLOURS	BLACK
WARRANTY	3 YRS
DIMENSIONS	150 X 150 X 42.3mm



LUNA S ON MOUNT CLIP L3
LF001589

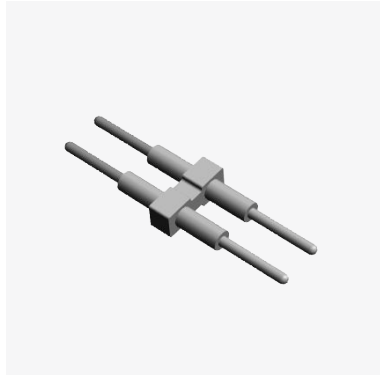
MODEL	S DC-24/48-L3
OPERATING VOLTAGE	48V
COLOURS	BLACK WHITE
WARRANTY	3 YRS
DIMENSIONS	68 x 12.3 x 6mm





LUNA S CONNECTOR
LF001377

MODEL	S DC-24/48-I
OPERATING VOLTAGE	24V / 48V
COLOURS	BLACK
WARRANTY	3 YRS
DIMENSIONS	100 x 27 x 11.3mm



LUNA S/M PIN
LF001680

MODEL	S/M PIN
OPERATING VOLTAGE	48V
COLOURS	CREAM
WARRANTY	3 YRS
DIMENSIONS	26 x 7.5 x 2.8mm

